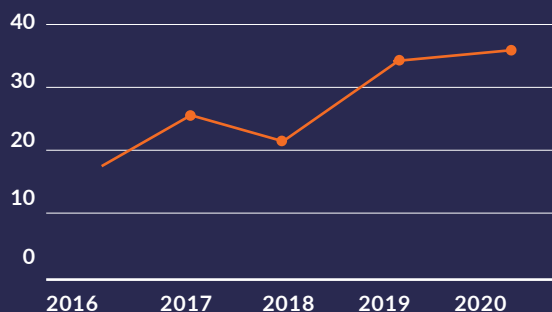


Together, we can go further, faster.

INPATIENT HYPOGLYCEMIA PREVENTION

A STRATEGY GUIDE

DATA



- How is hypoglycemia data collected and reported in your organization?
- Review your organization's Hypoglycemia data. Is one unit over-represented?
- Do you have fewer than 5 hypoglycemic events per quarter in your organization? Try the [Infrequent Events Calculator](#) to see trends and shifts in hypoglycemia events more clearly.

NEXT STEPS

Review the Adverse Drug Events (ADEs) [Change Package](#)

Have team members complete the "How Do We Improve" learning modules in the [Building Blocks of Quality and Patient Safety](#) course.

Review posts about Adverse Drug Events from your peers in the [Patient Safety Focus Areas CLIC Community](#)

MAP YOUR

IMPROVEMENT STRATEGY



GET
READY



GET
GOING



GET
SET



GET
RE-INVIGORATED

✓ GET READY

✓ GET SET

✓ GET GOING

✓ GET RE-INVIGORATED

✓ GET READY

LOOKING FOR MORE INFORMATION?

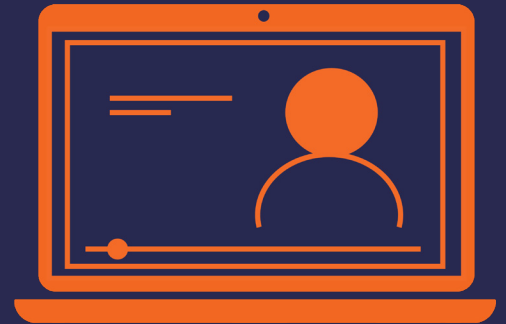


CREATE

- An account on CLIC

WATCH

- “How do we improve”
- Hypoglycemia prevention video learning modules



READ

- ADEs Change Package
- Patient Safety Focus Areas CLIC Community



GET
READY



GET
SET



GET
GOING



GET
RE-INVIGORATED



GET SET

READY TO START PLANNING FOR IMPROVEMENT AND IDENTIFYING WHERE TO START?

WATCH

- Discovery Tool [overview video](#)
- Hypoglycemia Process Improvement [Discovery Tool instructional video](#)
- Hypoglycemia Prevention [Drivers for Improvement videos](#)



PLAN

- Host a Focus Group for patients and family caregivers from your hospital to learn about their inpatient glycemic control experience to identify opportunities for improvement
See if your knowledge is up to date! Take the [Hypoglycemia pre-test](#)
- Select a test of change from the [Adverse Drug Events Change Package](#) and plan the test using the [Quality Improvement Project Planning Worksheet](#)
- Download and complete the [Hypoglycemia Discovery Tool](#)



RESOURCES

- [American Diabetes Association's 2020 Standards of Medical Care for the Inpatient Diabetic](#)
- [Minnesota Patient Safety Hypoglycemia Adverse Drug Event Gap Analysis](#)
- [Society of Hospital Medicine Glycemic Control Implementation Guide](#)

 GET GOING

READY TO STOP PLANNING AND START DOING?

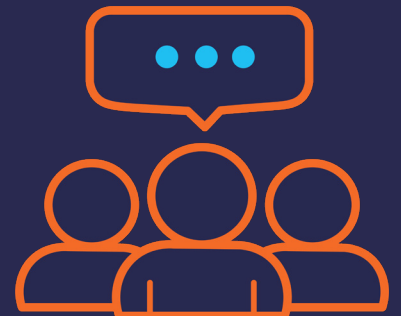


PRIORITIZE

- Complete the [Hypoglycemia Discovery Tool](#) for 5-10 patients to identify your target processes for improvement

COLLABORATE

- Engage a patient family advisor to participate on your improvement team
- Set up a coaching call with an Improvement Advisor that specializes in Hypoglycemia Prevention by using the Coaching Sign Up link in CLIC.
- Report out on tests of change successes and challenges with your improvement advisor coach.
- Share tools, resources, innovations, and ideas that your team develops in a post on the [Patient Safety Focus Areas Community](#) in CLIC.



LEARN

- [Register](#) to participate in an ADE collaborative learning session when available



✓ GET RE-INVIGORATED

IMPROVEMENT IS NOT LINEAR. NEED A FRESH PERSPECTIVE OR IDEA FROM YOUR TEAM?

RE-CALIBRATE

- Be sure to watch the [Discovery Tool Overview Video](#), as well as the Hypoglycemia Process Improvement [Discovery Tool Instructional Video](#), then download and complete the [Hypoglycemia Discovery Tool](#). Look at 5-10 charts where hypoglycemia occurred (if events are rare, just use the tool for the next ten patients on insulin). Scan for themes where best practices are not embedded. Tackle 1, 2, or 3 of those with process improvement teams.



COLLABORATE

- Engage a patient family advisor or former patient / family member to participate on your improvement team.
- Set up a coaching call with an Improvement Advisor that specializes in Hypoglycemia Prevention by using the Coaching Sign Up link in CLIC.

LEARN

- Watch the Hypoglycemia Prevention [Drivers for Improvement](#) video modules with your team
- [Register](#) to participate in an ADE collaborative learning session when available

