

PREVENTING VENTILATOR- ASSOCIATED EVENTS



PREVENTING VENTILATOR-ASSOCIATED EVENTS *CHANGE PACKAGE*



ACKNOWLEDGEMENTS

We would like to recognize the contributions of the Health Research & Educational Trust (HRET) Hospital Innovation and Improvement Network (HIIN) team and Cynosure Health Solutions for their work in developing the content of this change package.

Suggested Citation: Health Research & Educational Trust (2017, February). *Ventilator-Associated Events (VAE) Change Package: 2016*. Chicago, IL: Health Research & Educational Trust. Accessed at <http://www.hret-hiin.org/>

Accessible at: <http://www.hret-hiin.org/>

Contact: hiin@aha.org

© 2017 Health Research & Educational Trust. All rights reserved. All materials contained in this publication are available to anyone for download on www.aha.org, www.hret.org or www.hpoe.org for personal, non-commercial use only. No part of this publication may be reproduced and distributed in any form without permission of the publication or in the case of third party materials, the owner of that content, except in the case of brief quotations followed by the above suggested citation. To request permission to reproduce any of these materials, please email hiin@aha.org.



TABLE OF CONTENTS

<i>PART 1:</i>	Adverse Event Area (AEA) Definition and Scope	2
<i>PART 2:</i>	Measurement	3
<i>PART 3:</i>	Approaching your AEA	4
<i>PART 4:</i>	Conclusion and Action Planning	20
<i>PART 5:</i>	Appendices	21
<i>PART 6:</i>	References	31

How to Use this Change Package

This change package is intended for hospitals participating in the Hospital Innovation and Improvement Network (HIIN) project led by the Centers for Medicare & Medicaid Services (CMS) and the Partnership for Patients (PPF); it is meant to be a tool to help you make patient care safer and improve care transitions. This change package is a summary of themes from the successful practices of high performing health organizations across the country. It was developed through clinical practice sharing, organization site visits and subject matter expert contributions. This change package includes a menu of strategies, change concepts and specific actionable items that any hospital can choose to implement based on need. Hospitals may use it to begin testing for purposes of improving patient quality of life and care. This change package is intended to be complementary to literature reviews and other evidence-based tools and resources.

PART 1: AEA DEFINITION AND SCOPE

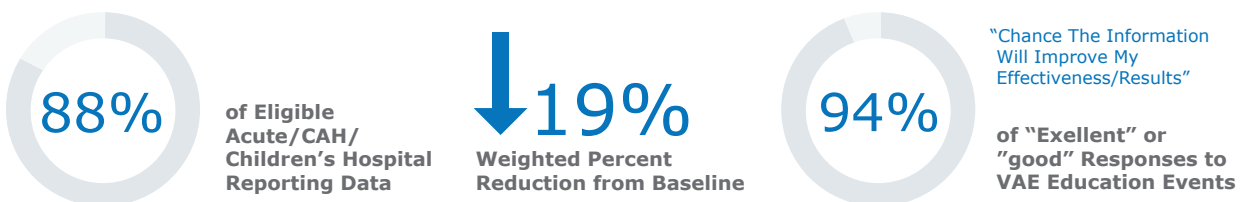
Mechanically ventilated patients are at high risk for complications such as ventilator-associated events (VAE) including ventilator-associated pneumonia (VAP), peptic ulcer disease (PUD), gastrointestinal bleeding, aspiration, venous thromboembolic events (VTE) and problems with secretion management. Evidence-based interventions can reduce the risk and incidence of these complications. For example, implementation of the ventilator bundle has been shown to reduce VAP.^{1,2} The VAP prevention bundle includes: head-of-bed elevation to 30 to 45 degrees, oral care with chlorhexidine at 0.12 percent, peptic ulcer disease prophylaxis, deep vein thrombosis (DVT) prophylaxis and ABCDEF bundle elements (i.e., assess, prevent and manage pain — both spontaneous awakening trials and breathing trials, choice of analgesia and sedation, delirium assessment, prevention and management, exercise and early progressive mobility and family engagement and empowerment).^{3,4}

Magnitude of the Problem

Over a quarter million patients in the United States receive mechanical ventilation annually, putting them at risk for acute lung injury, including mortality related to pneumonia and acute respiratory distress syndrome, among other lung injuries and death.^{5,6,7} In 2011, nearly 50,000 patients developed VAP during the course of their acute care hospital stay and 157,000 patients were diagnosed with health care-associated pneumonia.⁸ Of patients on mechanical ventilation, the elderly (aged 85 years and older) are at a higher risk for lung injury than younger.⁹ Poor outcomes after mechanical ventilation include extended time on mechanical ventilation, longer stays in the ICU and hospital, increased health care costs and increased risk of disability and death.¹⁰ Mortality attributed to ventilator-associated pneumonias (VAPs) is estimated to be between nine and 13 percent.^{11,12} It is predicted that a VAP diagnosis costs an additional \$41,000 and leads to a 14 day increase in length of stay for acute care hospital patients.¹³


> HEN 1.0 Progress

- Through the work of the AHA/HRET HEN, from 2011 through 2014, over 1,400 hospitals worked to prevent and reduce VAE. Results summarized below.

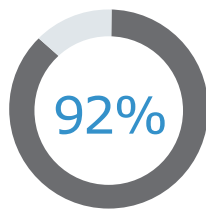


WHAT DOES THAT MEAN?

58 
VAEs PREVENTED

\$1,218,000 
TOTAL PROJECT ESTIMATED COST SAVING

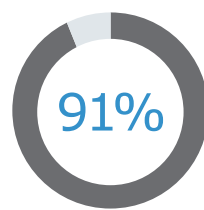
 40%
10 states MEETING THE REDUCTION GOAL



of Eligible
Acute/CAH/
Children's Hospital
Reporting Data



18%
Reduction in
VAE Measures



Percent of participants
that stated information
provided will promote
higher quality work

WHAT DOES THAT MEAN?

278
VAE HARMS PREVENTED

\$5,833,000
TOTAL PROJECT ESTIMATED COST SAVINGS

8 states
MEETING THE
REDUCTION IN PREVENTABLE
HARM GOAL 40%

> HIIN Reduction Goals

- Reduce the prevalence of ventilator-associated events (VAE) by 20 percent by September 27, 2018.

PART 2: MEASUREMENT

A key component to making patient care safer in your hospital is to track your progress toward improvement. This section outlines the nationally recognized process and outcome measures in which you will be collecting and submitting data as part of the AHA/HRET HIIN. Collecting these monthly data points at your hospital will guide your quality improvement efforts as part of the Plan-Do-Study-Act (PDSA) process. Tracking your data in this manner will provide valuable information you need to study your data across time and determine the effect your improvement strategies have in your hospital at reducing patient harm. Furthermore, collecting these standardized metrics will allow the AHA/HRET HIIN to aggregate, analyze and report its progress toward reaching the project's 20/12 goals across all AEAs by September 2018.

Nationally Recognized Measures: Process and Outcome

Please download and reference the encyclopedia of measures (EOM) on the HRET HIIN website for additional measure specifications and for any updates after publication at: http://www.hret-hiin.org/data/hiin_eom_core_eval_and_add_req_topics.pdf

HIIN Evaluation Measure

- Ventilator-associated condition (VAC) – all facilities
- Infection-related, ventilator-associated complication (IVAC) – all facilities

> Process Measures

- Percentage of patients who underwent the ABCDEF bundle assessment
- Percentage of eligible patients who receive spontaneous awakening trial
- Percentage of eligible patients who receive spontaneous breathing trial

PART 3: APPROACHING YOUR AEA

Suggested Bundles and Toolkits

- > Society of Critical Care Medicine ICU Liberation. Retrieved at: www.iculiberation.org
- > Critical Care Societies Collaborative joint statement on prevention of VAE. Retrieved at: <http://ccsconline.org/ventilator-associated-pneumonia>
- > Vanderbilt ICU Delirium and Cognitive Impairment Study Group. Retrieved at: www.icudelirium.org
 - ABCDEF Bundle
 - Protocols
 - Assessment tools
 - Patient and family education
 - For key tools and resources related to preventing and reducing sepsis mortality, visit: <http://www.hret-hiin.org/>
- > The “Wake Up and Breathe” protocol pioneered by Vanderbilt University. Retrieved at: <http://www.mc.vanderbilt.edu/icudelirium/docs/WakeUpAndBreathe.pdf>
- > AACN Practice Alert. Delirium Assessment and Management. Retrieved at: <http://www.aacn.org/wd/practice/content/practicealerts/delirium-practice-alert.pcms?menu=practice>
- > Iatrogenic Delirium Change Package from HRET-HIIN. Retrieved at: http://www.hret-hiin.org/topics/iatrogenic_delirium/index.shtml
- > IDSA and SHEA Compendium on VAP 2014 Update. Retrieved at: <http://www.jstor.org/stable/10.1086/591062>
- > CDC/NHSN Surveillance for VAE. Retrieved at: <http://www.cdc.gov/nhsn/acute-care-hospital/vae/>
- > VAE Calculator Version 3. Retrieved at: www.cdc.gov/nhsn/VAE-calculator/index.html
- > For key tools and resources related to preventing and reducing VAE, visit www.hret-hiin.org

Investigate Your Problem and Implement Best Practices

DRIVER DIAGRAMS: A driver diagram visually demonstrates the causal relationship between your change ideas, secondary drivers, primary drivers and your overall aim. A description of each of these components is outlined in the table below. This change package is organized by reviewing the components of the driver diagram to first, help you and your care team identify potential change ideas to implement at your facility and second, to show how this quality improvement tool can be used by your team to tackle new process problems.

AIM	PRIMARY DRIVER	SECONDARY DRIVER	Change Idea
		SECONDARY DRIVER	Change Idea
	PRIMARY DRIVER	SECONDARY DRIVER	Change Idea

AIM: A clearly articulated goal or objective describing the desired outcome. It should be specific, measurable and time-bound.

PRIMARY DRIVER: System components or factors that contribute directly to achieving the aim.

SECONDARY DRIVER: Action, interventions or lower-level components necessary to achieve the primary driver.

CHANGE IDEAS: Specific change ideas which will support or achieve the secondary driver.

Drivers in This Change Package

PREVENT VAE	ELEVATE THE HEAD OF BED (HOB) TO BETWEEN 30-45 DEGREES	USE VISUAL CUES	Change Idea
		IDENTIFY A DESIGNATED STAFF MEMBER TO CHECK HOB ELEVATION ON EACH SHIFT	Change Idea
		ESTABLISH A PROCESS FOR HOB ELEVATION IN NON-ICU AREAS AND DURING TRANSPORT	Change Idea
		USE ORDER SETS FOR HOB ELEVATION CHECKS	Change Idea
	PEPTIC ULCER DISEASE (PUD) PROPHYLAXIS	INCORPORATE PUD PROPHYLAXIS INTO ORDER SETS AND DAILY NURSING CHECKLISTS	Change Idea
		ENGAGE PHARMACY	Change Idea
	VENOUS THROMBOEMBOLISM (VTE) PROPHYLAXIS	INITIATE VTE PROPHYLAXIS UNLESS CONTRAINDICATED	Change Idea
		ENLIST INTERDISCIPLINARY SUPPORT	Change Idea
	UTILIZE THE ABCDEF BUNDLE	'A' — ASSESS, PREVENT AND MANAGE PAIN	Change Idea
		'B' — BOTH SPONTANEOUS AWAKENING TRIALS (SAT) AND SPONTANEOUS BREATHING TRIALS (SBT)	Change Idea
		'C' — CHOICE OF ANALGESIA AND SEDATION	Change Idea
		'D' — DELIRIUM MONITORING AND MANAGEMENT	Change Idea
		'E' — EARLY PROGRESSIVE MOBILIZATION AND AMBULATION	Change Idea
		'F' — FAMILY ENGAGEMENT AND EMPOWERMENT	Change Idea
	ORAL CARE	CREATE PROTOCOLS FOR REGULAR ORAL CARE	Change Idea
		EDUCATE NURSING STAFF ABOUT ORAL CARE	Change Idea

Primary Driver:**RELEVATE THE
HEAD OF BED (HOB)
TO BETWEEN
30-45 DEGREES**

Elevating the head of the bed to between 30 to 45 degrees is a simple nursing measure that has resulted in VAP reduction. Keeping the HOB elevated has been shown to help prevent aspiration of gastric contents and secretions.^{3,14,15,16,17,18,19}

Secondary Driver > USE VISUAL CUES

Visual cues are important to remind staff to elevate the HOB. A visual cue can also act as a guide to show staff how steep 30 to 45 degrees should be as staff often underestimates the angle of the HOB. One research study found that HOB angle was perceived correctly by only 50 to 86 percent of clinicians.²⁰

Change Ideas

Standardizing the processes of care has been shown to increase the number of patients who are placed in a semi-recumbent position.^{21,22} Engage staff nurses in collaborating and developing visual cues that are effective in their environment and supports unit workflow. See Appendix II for an example of a VAE Prevention Visual Cue and Appendix III for Colored Stripe on Bed Frame Side Rail visual cue. Examples of visual cues include:

- > Using a line (red tape) on the wall that can only be seen if the head of the bed is below a 30 degree angle.²³
- > Cutting a piece of cardboard in the shape of a slice of pizza, i.e., a 30 degree triangle.
- > Placing a red stripe on the bedframe at a 30 degree angle. When the HOB is at 30 degrees, the red stripe will appear to be parallel to the floor.
- > Including the interventions on nursing flow sheets.
- > Incorporating HOB elevation into the standardized order set.

Secondary Driver > IDENTIFY A DESIGNATED STAFF MEMBER TO CHECK HOB ELEVATION ON EACH SHIFT

The environment of an intensive care unit is a busy and stressful one. Clinicians are confronted with multiple urgent demands for attention. Engagement of the entire team, including bedside nurses, intensivists, nurses' aides, respiratory therapists and the charge nurse is essential to ensure that preventive measures such as elevated HOB are implemented. See Appendix IV for an example of a Best Practices Checklist.

Change Ideas

- > Assign respiratory therapy staff or a unit assistant to observe for compliance with HOB greater than 30 degrees every one to two hours and notify bedside nurse if HOB is not in compliance.
- > Include interventions on nursing flow sheets.
- > Include HOB elevation in charge nurse rounds, if performed; the charge nurse can provide "just-in-time training" as needed.
- > Promote an environment in which respiratory therapists work collaboratively with nursing staff to maintain HOB elevation.
- > If HOB elevation is contraindicated, communicate and document the rationale and contraindication.





Secondary Driver > ESTABLISH A PROCESS FOR HOB ELEVATION IN NON-ICU AREAS AND DURING TRANSPORT

At-risk occasions for aspiration include when a patient is in the emergency department after intubation awaiting an ICU bed, or during transport within the hospital (as patients travel to and from locations for diagnostic testing and procedures) or between facilities (e.g., from a referring facility to an accepting facility).

Change Ideas

- > Work with the ED staff to incorporate HOB elevation into their workflow once patient is hemodynamically stable. Ventilated patients do not routinely remain for more than a few hours in the ED. The creation of a checklist to ensure that atypical, but essential care interventions, such as elevated HOB are performed is helpful.
- > Utilize respiratory therapy staff, as they round and care for patients on ventilators in the ED, to double-check and ensure HOB elevation is performed.
- > Educate transport staff on the benefits of HOB elevation and how it should be performed.
- > Partner with your referring hospitals and nursing homes to implement essential bundle elements such as HOB elevation while the patient is awaiting transport.
- > Work with ambulance personnel to establish the HOB practice during transport.

Secondary Driver > USE ORDER SETS FOR HOB ELEVATION CHECKS

Research suggests that standardized order sets can be effective in improving compliance with evidence-based practices in areas such as VAP reduction, improved stroke care and sepsis. Standardized order sets have been shown to increase patient safety and improve outcomes for multiple patient conditions.^{24,25,26,27}

Change Ideas

- > If using an electronic health record (EHR), institute computer based pop-up reminders.
- > Discuss procedures during multi-disciplinary rounds to ensure that all of the bundle components have been understood and implemented.
- > Establish a process to communicate contraindications for HOB elevation for an individual patient.

Suggested Process Measures for Your Test of Change

- Daily audit of the percentage HOB elevation compliance and/or documentation of contraindications to HOB elevation

Hardwire the Process

Hardwiring tactics for the HOB elevation include many of the change ideas. Ongoing monitoring of compliance for HOB elevation and performance feedback to staff is vital to sustain recommended practices. Implement routine reminders to help the intervention become part of the daily care processes, such as including HOB elevation on the daily audit checklist and on nursing and respiratory care flow sheets.

Primary Driver:

PEPTIC ULCER DISEASE (PUD) PROPHYLAXIS

Critically ill patients requiring mechanical ventilation are at increased risk for stress ulcers and subsequent gastrointestinal bleeding. Additionally, bacterial colonization of the stomach can lead to infection of the respiratory tract through aspiration of stomach secretions.^{3,28}

Secondary Driver > INCORPORATE PUD PROPHYLAXIS INTO ORDER SETS AND DAILY NURSING CHECKLISTS

To reduce PUD risk, mechanically-ventilated patients should receive PUD prophylaxis.²⁹ Histamine 2 (H2) blockers are preferred over sucralfate. Proton-pump inhibitors (PPI) may be efficacious, and serve as an alternative to sucralfate or an H2 blockers. Requiring PUD prophylaxis on both ICU admission and ventilator order sets will standardize the treatment. Furthermore, include PUD prophylaxis in charge nurse rounds (see Appendix IV for an example of a Best Practices Checklist). A charge nurse can provide "just-in-time" training and assist bedside nurses in obtaining orders for PUD prophylaxis.

Change Ideas

- > Discuss interventions during multidisciplinary rounds.
- > Include a clinical pharmacist on the care team to guide complex cases.
- > Include PUD prophylaxis in ICU admission and ventilator order sets.
- > Allow physicians to opt-out when clinically appropriate and communicate and document the reasons for the opt-out to promote learning and understanding among the health care team.
- > Make PUD review part of daily charge nurse rounding.

Secondary Driver > ENGAGE PHARMACY

Asking the pharmacy to support your program will add a layer of redundancy to improve reliability and promote opportunities for earlier detection of failure patterns. Including a pharmacist as part of interdisciplinary rounds is a cost-effective addition and can improve patient safety.^{31,32} Pharmacists can produce reports from the pharmacy information system that can positively affect care and can consult with physicians as medically appropriate.

Change Ideas

- > Discuss procedures and interventions during multidisciplinary rounds.
- > Consider producing a pharmacy exception report for PUD prophylaxis.
- > Include a pharmacist on ICU multidisciplinary rounds.

Suggested Process Measures for Your Test of Change

- Daily audit of PUD prophylaxis percent compliance or documented contraindications to PUD prophylaxis

Hardwire the Process

To hardwire PUD prophylaxis, make the process of ordering PUD prophylactic medications as routine as possible. If such orders are contraindicated then the rationale should be communicated and documented. Methods for hardwiring consist of:

- > Including PUD prophylaxis on the daily audit checklist and taking corrective action if PUD prophylaxis is missing
- > Including it as a standing item in nurse-to-nurse handoff reports

Primary Driver:

VENOUS THROMBOEMBOLISM (VTE) PROPHYLAXIS

Mechanically-ventilated patients are at high risk for VTE. Risk factors include immobility and a stress inflammatory response resulting in hyper-coagulation. Although there is no evidence to suggest VTE prophylaxis reduces VAE risk, it is appropriate to include VTE prophylaxis in a bundle that promotes improved care of mechanically-ventilated patients due to their high risk for VTE.^{3,33}

Secondary Driver > INITIATE VTE PROPHYLAXIS UNLESS CONTRAINDICATED

All high risk patients should have pharmacological VTE prophylaxis unless it is contraindicated due to bleeding risk. For patients with severe bleeding risk, mechanical prophylaxis is recommended unless contraindicated due to the patient's condition. Intermittent pneumatic compression (IPC) is the preferred method for mechanical prophylaxis.^{35,34} The addition of mechanical prophylaxis to pharmacological prophylaxis has shown some benefits in VTE reduction.³⁵

Change Ideas

- > Include VTE prophylaxis in the ICU admission order set and the ventilator order set.
- > Allow physicians to opt-out with appropriate patients and ask that the rationale for the opt-out be communicated and documented.

Secondary Driver > ENLIST INTERDISCIPLINARY SUPPORT

Engage pharmacists to ensure ICU patients have been given appropriate VTE prophylaxis and to review pharmacotherapy on interdisciplinary rounds. VTE prophylaxis should be a team effort to initiate and ensure completion.

Change Ideas

- > Consider creation of a pharmacy exception report to determine if appropriate VTE prophylaxis is being provided.
- > Include VTE prophylaxis on nursing daily checklist and charge nurse rounds.

Suggested Process Measures for Your Test of Change

- Daily audit of percentage VTE prophylaxis compliance or documentation of contraindications

Hardwire the Process

Making the VTE ordering process automatic will ensure that VTE prevention is addressed for every mechanically-ventilated patient. Examples of hardwiring include inclusion in ICU or ventilator order sets, pharmacist-driven daily exception reports, inclusion in multidisciplinary rounds and charge nurse daily audits. Each of these examples provide real time feedback to direct caregivers and providers and allows for immediate correction of omissions. In addition, the inclusion of a clinical pharmacist on the interdisciplinary team provides easy access for clinicians to collaborate and coordinate care.

Primary Driver:

UTILIZE THE ABCDE F BUNDLE

The ABCDEF bundle extends the original VAP bundle and its HOB, PUD prophylaxis, VTE prophylaxis and oral care interventions. The ABCDEF bundle was developed to improve the health of ventilated patients by reducing their risk of over-sedation, improve patient, immobility, improve patient comfort, reduce the risk of infection and decrease the risk of mental status changes and long term morbidity.³⁶ The bundle approach provides a means to incorporate evidence-based interventions into patient care. Bundles are not meant to be rigid recipes for the care of ventilated patients. Providers should assess which components of a bundle would be appropriate for each individual patient.

ABCDE F bundle components include:^{37,38,39}

- A** — Assess, prevent and manage pain
- B** — Both spontaneous awakening trials and spontaneous breathing trials
- C** — Choice of analgesia and sedation
- D** — Delirium: assess, prevent and manage
- E** — Exercise and early mobility
- F** — Family engagement and empowerment

Secondary Driver > 'A' — ASSESS, PREVENT AND MANAGE PAIN

Caregivers should be aware that patients who received mechanical ventilation report pain was part of their suffering regardless whether or not they underwent invasive procedures.⁴⁰ Poor pain control is a risk factor in critically ill patients for nosocomial infection, longer mechanical ventilation duration and may precipitate delirium.⁴¹

In January 2013, the updated practice guidelines for pain, agitation and delirium (PAD) were published.⁴² The goal of the guidelines is to improve the comfort and outcomes of adult critically ill patients using a patient-centered, evidence-based approach.⁴³ Key recommendations from the PAD guidelines are to treat pain before anxiety, consider goal directed sedation using a validated scale and avoid the use of benzodiazepines.

According to the 2013 PAD Guidelines⁴⁴:

- > Pain should be routinely monitored in all adult ICU patients.
- > Vital signs alone should not be used for pain assessment but as a cue to further assess pain.
- > Intravenous opioids may be the first line choice to treat non-neuropathic pain in critically ill patients.

Change Ideas

- > Assess pain routinely, i.e., include pain assessment with vital signs.
- > Use a validated pain assessment tool, i.e., the Critical-Care Pain Observation Tool or the Behavioral Pain Scale.⁴⁵
- > Include pain management in interdisciplinary rounds and nurse to nurse handoffs.

Secondary Driver > 'B' — BOTH SPONTANEOUS AWAKENING TRIALS (SAT) AND SPONTANEOUS BREATHING TRIALS (SBT)

Sedation in a mechanically ventilated patient may be necessary to control anxiety, reduce pain and manage oxygenation needs. However, the use of sedation can prolong the duration of mechanical ventilation.^{46,47,48} Daily sedation interruption or a light target level of sedation should be routinely used in adult ICU patients on mechanical ventilation as recommended by the 2013 PAD Guidelines. This enables patients receiving sedation to have a neurological assessment. Daily screening of respiratory function using trials of daily awakening and spontaneous breathing has been shown to reduce the duration of mechanical ventilation and the risk of VAP.^{49,50,51}

Coordinate SAT and SBT to maximize weaning opportunities when patient sedation is minimal. Nursing and respiratory therapy should work as a team to ensure patient safety and to address the selected VAE prevention bundle interventions. SBT will fail if



the patient has had too much sedation to allow for spontaneous awakening or breathing. The use of non-physician, staff-driven protocols has been found to be very effective in assessing readiness to wean from the ventilator and has demonstrated a reduction in VAP.⁵² By developing staff-driven protocols and incorporating SAT and SBT into the daily care of the ventilator patient, patients will experience fewer days on the ventilator and a shorter ICU stay.^{53,54}

Change Ideas

- > Adopt SAT and SBT protocols with clearly defined roles and responsibilities (see Appendix V for sample SAT and SBT protocols).
- > Incorporate into daily workflow:
 - Determine if a patient meets the SAT criteria with no contraindications
 - Decrease or stop sedation per the SAT protocol (nurse)
 - Determine if patient meets SBT criteria with no contraindications
 - Perform an SBT per the protocol (respiratory therapist)
- > Perform daily assessments of readiness to wean and extubate based on the SAT/SBT results.
- > Discuss the results of a patient's SAT and SBT during daily multidisciplinary rounds. The SAT and SBT results should also be included in nurse-to-nurse handoff, nurse-to-charge-nurse reports and charge nurse-to-charge nurse reports.

Secondary Driver > 'C' — CHOICE OF ANALGESIA AND SEDATION

Sedation typically assists in the pulmonary recovery of patients and should be goal-oriented. Too little sedation can lead to increased anxiety, increased work of breathing, reduced blood and tissue oxygenation and self-extubation. Too much sedation can lead to decreased respiratory muscle function, prolonged neurological depression and the inability to wean from mechanical ventilation. The use of a sedation algorithm or scale, such as the RASS, to monitor the level of sedation will help to reduce over-sedation, deliver the most effective sedative dose and reduce the duration of mechanical-ventilation.^{55,56} Type of sedation has emerged in the literature to be key in ventilator weaning, length of ventilation, ICU length of stay and the development of delirium.^{57,58,59} See Appendix VII for a Sedation Protocol for Mechanically Ventilated Patients.

The 2013 PAD Guidelines recommendations for agitation include:

- > Titrate sedative medications to maintain a light level of sedation, unless clinically contraindicated.
- > Use non-benzodiazepine sedation strategies.
- > Sedation management should be goal directed by using tools for agitation assessment such as the Richmond Agitation-Sedation Scale (RASS) and the Sedation-Agitation Scale (SAS).
- > Analgesia-first sedation should be used in mechanically ventilated adult ICU patients.

Change Ideas

- > Coordinate between nursing and respiratory therapy to manage the SAT and SBT.
- > Discuss sedation goals and progress toward reduction in multidisciplinary rounds.
- > Use whiteboards, the EMR or other communication tools to enhance coordination.
- > Consider strategies to decrease benzodiazepine usage, such as:
 - Goal-directed sedation with titration of medications using sedation protocols and a sedation scale, i.e., RASS or SAS. See Appendix VII for a Sedation Protocol for Mechanically Ventilated Patients
- > Consider the use of an alternative sedative to benzodiazepines (e.g., dexmedetomidine or propofol).

Secondary Driver > 'D' — DELIRIUM MONITORING AND MANAGEMENT

Delirium, an acute form of brain dysfunction, remains undetected by both nurses and doctors in more than 65 percent of ICU patients.^{60,61} Up to 81 percent of mechanically ventilated patients experience delirium.⁶² Delirium is associated with a longer duration of mechanical ventilation, a longer length of stay in the ICU and the hospital and with increased morbidity, mortality and long term cognitive impairment.^{63,64} The Food and Drug Administration (FDA) has not yet approved any drug to treat delirium, nor is there any evidence that the use of phenothiazines, such as haloperidol, treats delirium. Patients, however, should have their pain and agitation addressed while maintaining a balance to prevent the development of delirium.

2013 PAD Guidelines recommendation regarding delirium include:

- > Delirium should be routinely monitored in all adult ICU patients.
- > Tools recommended for delirium assessment include the Confusion Assessment Method for the ICU (CAM-ICU) and the Intensive Care Delirium Screening Checklist (ICDSC).
- > Promote early mobilization of adult ICU patients whenever feasible to reduce the incidence and duration of delirium.
- > Use non-benzodiazepine sedation whenever possible.
- > Benzodiazepines have been reported to be an independent risk factor for delirium.^{65,66,67}

For more in-depth information on delirium monitoring and management, access the Iatrogenic Delirium Change Package at:

www.hret-hiin.org/topics/iatrogenic-delirium.shtml

Change Ideas

- > Adopt a delirium prevention and management protocol.
- > Assess the patient at least daily or as needed for confusion and delirium and to determine if the target RASS/SAS goal is met. If not, audit and analyze the reasons for missing the target. See Appendix VII for a Sedation Protocol for Mechanically Ventilated Patients.
- > Designate a time of day for the SAT and SBT to be attempted that will not disrupt patient sleep cycles. See Appendix VI for a sample of Communication of Rest Period.
- > Implement a pharmacist review of patients' medication list to help identify any sedatives, analgesics, or anticholinergic drugs that may be discontinued or decreased in dose.
- > Remove benzodiazepines from standard order sets.
- > Avoid using benzodiazepines in patients at high risk for delirium.

Secondary Driver > 'E' — EARLY PROGRESSIVE MOBILIZATION AND AMBULATION

Many research studies have sought to find the etiology of ICU-acquired weakness and for the acute onset of neuromuscular and functional impairment in the critically ill for which there is no plausible cause other than critical illness.^{68,69,70} This weakness impairs ventilator weaning and functional mobility and can persist well after hospital discharge. Early progressive mobility can mitigate neuromuscular and functional impairment and reduce the inherent risks of immobility such as VAP, hospital-acquired pneumonia, prolonged length-of-stay, skin breakdown, delirium incidence and decreased cardiovascular function.^{71,72} The new PAD guidelines recommend early mobilization of adult ICU patients whenever feasible to reduce the incidence and duration of delirium.⁷³ Some studies suggest that early mobilization can decrease delirium duration by 50 percent, can decrease ICU length of stay by 25 percent and can increase the likelihood of a return to independence by the time of discharge by nearly 75 percent.^{74,75,76} "Progressive mobility is defined as a series of planned movements in a sequential



manner, beginning at a patient's current mobility status or level with a goal of returning to his/her baseline."⁷⁷ See Appendix VIII for a Sample Mobility Protocol.

Change Ideas

- > Modify standardized ICU admission orders to change the default activity level from bed rest to as tolerated.
- > Establish a process for timely physical and occupational therapy evaluation for patients on ventilator support to establish a plan for progressive mobility.
- > Include the mobility plan in interdisciplinary rounds, handoffs and charge nurse reports.
- > Partner nursing, rehabilitation and respiratory into scheduling mobility activities.

Secondary Driver > 'F' — FAMILY ENGAGEMENT AND EMPOWERMENT

The "F" in the bundle includes and highlights the family as an integral member of the care team instead of being a spectator on the sidelines. Families are important because they are a support to the emotional and mental health of the patient. They also support the clinical care team by asking questions that serve as reminders to include care interventions and can assist in care delivery, such as HOB elevation and ambulation, performing oral care and passive range of motion. It is up to the care team to enable families to feel comfortable speaking up, asking questions and being an active part of the team. Invite families to participate in care by encouraging them to ask if other prevention efforts have been completed, such as oral care. Consumer groups have become valued allies in this effort by encouraging patients' families to partner with hospital staff to keep their loved ones safe.⁷⁸ The Vanderbilt ICU Delirium and Cognitive Impairment Study Group website provides family engagement and empowerment tools for families (see the bundles).

Change Ideas

- > Educate patients and their families on the importance of keeping the HOB elevated, the risks of VAE and other ways they can partner with caregivers to mitigate those risks. See Appendix IX for a Sample Family Education Tool.
- > Ask family members to remind staff to elevate the HOB after linen changes, patient repositioning or other regular events in the patient's day.
- > Teach family volunteers how to perform oral care and how to suction oral secretions. Use teach-back and return demonstration to ensure adequate understanding and ability. Include family members or caregivers in monitoring and documenting oral care at the bedside.
- > Teach families the importance of pain management and the behavioral manifestations of pain in the sedated patient utilizing the teach-back method. Include their pain assessments in bedside handoffs when family is present.
- > Post the bundle elements at the bedside and teach family members, using teach-back.
- > Include family in clinical rounds, physician rounds and bedside handoffs. Solicit feedback and observations from the patient's family on the patient's pain, sedation levels, oral care, HOB elevation and mobility as much as possible.
- > Encourage family members to keep an intensive care diary of events to share with their loved one to help the patient cope with traumatic events. Many patients experience post-traumatic stress disorder (PTSD) after their ICU stay.⁷⁹

Suggested Process Measures for Your Test of Change

- Sample a small number of patients each month to determine if their levels of agitation and sedation are assessed reliably (suggested sample size = 10 percent of the cases)
- Sample a small number of patients each month to determine if their levels of agitation and sedation assessed using SAS/RASS match the targets set forth by the ordering physicians (suggested sample size = 10 percent of the cases)
- Audit the percent compliance of patients on progressive mobility protocol or meeting contraindications for non-compliance (e.g., hemodynamic instability)
- Audit the percentage of mechanically ventilated patients with documented family education regarding pneumonia prevention

Hardwire the Process

Hardwiring the ABCDEF bundle can be challenging, but multidisciplinary collaboration is key. Team members' roles and tasks should be clearly defined. While education of clinicians is foundational, it is not a hardwiring tactic by itself. Hardwiring comes in the process design: adoption and testing of protocols; coordination of care among physicians, nursing and respiratory staff; and reminders for treatments and intervention. In addition, managing ABCDEF protocol implementation in smaller steps and anticipating staff fears about patient self-extubation is key to implementing a sustainable process. Research literature suggests that self-extubation is slightly higher with SAT/ST, but re-intubation rates are lower in the ST/SAT group, indicating that many patients were ready for extubation.^{80,81} Incorporate the ABCDEF bundle into standing orders as a default order, making its elements a daily part of care and provide opt-outs for patients for whom the bundle or its individual elements are contraindicated.



Primary Driver:

ORAL CARE

Oral care may seem to be a simple task, but it can be challenging to implement. Swabbing a patient's mouth with an antiseptic mouth wash has been recommended for comfort, but recent studies have demonstrated that oral care with an antiseptic has also reduced the risk for VAE.⁸²

Secondary Driver > CREATE PROTOCOLS FOR REGULAR ORAL CARE

Protocols will support regular oral care with an antiseptic solution, brush teeth and perform oral and pharyngeal suctioning. Oral care is a basic task that can positively impact VAE prevention.⁸²

Change Ideas

- > Brush teeth twice a day, as per order sets in all ventilated patients.^{83,84}
- > Include routine oral care (at least every two-four hours) with an antiseptic mouthwash swab to clean the oral cavity and teeth.⁸⁵
- > Order chlorhexidine 0.12 percent mouthwash at least daily (many studies suggest using mouthwash every 12 hours) for all ventilated patients.^{86,87,88} Include the chlorhexidine mouthwash on the medication administration record (MAR) as a scheduled medication to ensure delivery.
- > Create visual cues to demonstrate compliance with oral care. Examples include keeping empty holders of oral care products by the bedside or dating and timing oral care products used.
- > Engage respiratory therapy in the performance of oral care; make it a joint nursing and respiratory therapy function.
- > Use a whiteboard to document the delivery of oral care; omissions will make missed interventions more obvious.

Secondary Driver > EDUCATE NURSING STAFF ABOUT ORAL CARE

Educate the nursing staff about the benefits of good oral hygiene and its role in reducing ventilator-associated pneumonia. Institution of the ventilator bundle does not by itself guarantee a decrease in VAE. A decrease in VAE is more likely to occur when compliance with the bundle is audited.^{89,90}

Change Ideas

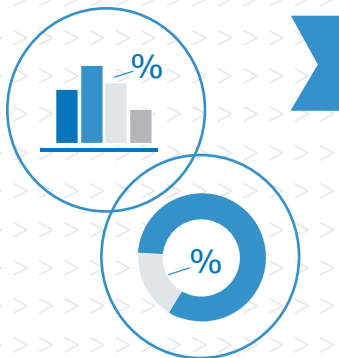
- > Provide routine feedback to staff on compliance with oral care recommendations.
- > Coach staff on the necessity of oral care in VAE prevention.
- > Perform regular audits to ensure compliance

Suggested Process Measures for Your Test of Change

- Daily audit percentage of oral care compliance

Hardwire the Process

Hardwiring oral care requires of all the necessary supplies and standard order sets for the chlorhexidine rinse and oral care frequency. Monitoring daily compliance by leadership and peers will reinforce the priority and maintain reliability. Additionally, setting up reminders or automatic prompts for oral care will help ensure care is performed reliably.



- > Begin with a bundle element that will be easy to trial, will likely be successful and have a significant positive impact. For example, implementing HOB elevation is less complicated than implementing SAT/STB protocols yet greatly reduces VAE risk.
- > Continue to implement the VAE bundle one element at a time.

Testing SAT/SBT protocols

Do not reinvent the wheel. Use a protocol that has been successful at another hospital and adapt it your facility. Test one step at a time. For example, do not plan to implement all of the ABCDEF recommendations at once. Concentrate first on the ABCD and then add the E and F.

Ask a receptive, early-adopter physician on your improvement committee to trial these changes with one of his or her next patients on ventilation. Ask a receptive nurse and respiratory therapist on your committee to trial the protocols as well. Test “small”: coordinate with the physician champion to trial the protocol on one patient, assisted by one nurse and one respiratory therapist.

Debrief as soon as possible after the test with those involved, asking:

- > What happened?
- > What went well?
- > What didn't go well?
- > What do we need to revise for next time?

Do not wait for the next committee meeting to make changes. Revise and re-test the revisions with the same physician, the same nurse and the same respiratory therapist.

Identify potential barriers

The complexity of the VAE prevention interventions require well designed and efficiently coordinated interdisciplinary processes. It is important that clinical leaders and executives be engaged in assessing for early warning signs of system failures that could be caused by new barriers or poorly designed systems. Investigating why those processes are breaking down will help identify barriers such as: engagement of front line staff or physicians, flawed process design, little to no testing, availability of supplies, knowledge deficit or inadequate leadership.

Recognize that many physicians could perceive these interventions as a change in their practice and may be resistant to those changes, creating a barrier to adoption.

- > Traditionally ventilation weaning and sedation were under a physician's sole purview, not duties implemented by a multidisciplinary, non-physician staff. To discuss the impact of these changes and promote acceptance and implementation, select respected lead physicians to serve on the improvement team and advocate as champions for these best practices with physician colleagues.
- > Order sets and protocols are seen by some physicians as cookbook medicine. Reframe these interventions as evidence-based medicine, using research findings to suggest improved and individualized patient care options to reduce the risk of VAE. Allow physicians to "opt-out" if the bundle or one of its elements is contraindicated. Ask the physician to help improve the bundle by communicating and documenting the rationale for why the intervention was not appropriate for the patient.

Providers may define tasks as "ours" and "theirs." Examples include: oral care is "theirs" — a nursing task, medications are "ours" — the responsibility of the physician and ventilator management is "theirs" overseen by the respiratory therapist. Include key stakeholders such as physicians, bedside nurses and respiratory therapists on improvement teams to collaborate in the development of protocols, work-flows and peer education programs.^{91,92}

These processes may be new territory for many physicians, nurses, respiratory therapists and pharmacists. Nurses and respiratory therapists, for example, may be concerned about errors and that patients may self-extubate during a SAT/SBT trial. They may also fear potential conflicts with or resistance from the medical staff. To mitigate these concerns:

- > Educate all health care providers about the proven methodologies to reduce the risks and incidence of VAE.
- > Share evidence and experience from comparable hospitals that demonstrate successful implementation of these processes without complications (e.g., self-extubations). If possible, visit a peer hospital that has successfully implemented the bundle to allow for peer sharing of learnings and experience.
- > Test the supporting processes using rapid-cycle improvement methodologies involving front line staff and physicians.

Enlist administrative leadership as sponsors to help remove or mitigate barriers

Because it is vital to have interdisciplinary collaboration to ensure success, enlist an executive sponsor who recognizes the value of teamwork and collaboration in preventing VAE. The sponsor can provide solutions and resources to address concerns about potential burdens of new process implementation such as ABCDEF bundles for hospital staff. An executive sponsor can help staff see the big picture on how these changes may benefit the entire organization, advocate for necessary funding, provide staffing and supplies, mitigate implementation barriers and educate the governing board.

Change not Only “The Practice,” but also “The Culture”

Instituting the VAE bundle will require a change in culture, particularly among physicians. Physicians will be asked to transition from their traditional approach of individualizing mechanical ventilation management for each patient to a standardized and more effective approach. Physicians may be concerned about the perceived loss of control and the risks of shared responsibility. Physician champions can encourage their peers to actively monitor the effectiveness of therapy and the benefits to the patient and thereby promote increased acceptance of bundles.

Many pulmonologists and intensivists prefer to learn from peers rather than to follow impersonal expert advice. Use lead pulmonologists and intensivists as peer educators to advocate for the adoption of improvements such as order sets.

Nurses and respiratory therapists may be uncomfortable implementing staff-driven sedation or SAT/ SBT protocols independent of physicians and may have little experience collaborating with other health professionals. Educate staff about the expertise and roles of their colleagues and provide opportunities for collaboration on the development of new protocols and care delivery such as SAT/SBT protocols, oral care or HOB elevation.

PART 4: CONCLUSION AND ACTION PLANNING

VAE prevention is complex and requires a high rate of compliance to recommended bundle elements. It also requires a multidisciplinary approach that includes bedside nurses, respiratory therapists, intensivists, physical therapists, pharmacists and unit and facility leadership working together. Key to success is ongoing monitoring of compliance to bundles for data driven decision-making, using data to drive practice and process changes and communication of supporting performance processes to staff.

Evaluate VAE prevention efforts by using the Top Ten Checklist (Appendix I). Ask “Do we have this element in place? If so, how well are we doing it? Is practice drift present?” Enlist physician, nursing, respiratory and physical therapy champions to join the team and to assist in data analysis, determine potential interventions and conduct small tests of change. If an element has not been adopted, consider adopting, testing and implementing the missing element.

Refine current processes to ensure ongoing high compliance by tapping into bedside staff. Ask “What gets in the way of performance (specific bundle element, i.e., SAT/SBT)? What change should be made to help? What is needed?” Test these solution ideas and adopt into process changes.

PART 5: APPENDICES

APPENDIX I: VENTILATOR ASSOCIATED EVENTS (VAE) TOP TEN CHECKLIST

Associated Hospital/Organization: HRET HIIN

Purpose of Tool: A checklist to review current or initiate new VAE reduction interventions in your facility

Reference www.hret-hiin.org

2017 Ventilator-Associated Events (VAE) Top Ten Checklist

PROCESS CHANGE	IN PLACE	NOT DONE	WILL ADOPT	NOTES (Responsible and By When?)
1. Include all elements of the bundle in charge nurse rounds and nurse-to-charge-nurse reports.	<input type="checkbox"/>	<input type="checkbox"/>	<input type="checkbox"/>	
2. Enlist a multidisciplinary approach. Nurses, physicians and respiratory therapy staff need to work together to ensure bundle items such as head of bed (HOB), spontaneous awakening trials (SAT), spontaneous breathing trials (SBT) and oral care are done according to recommendations.	<input type="checkbox"/>	<input type="checkbox"/>	<input type="checkbox"/>	
3. Elevate HOB to between 30-45 degrees (use visual cues, designate one person to check for HOB every one to two hours).	<input type="checkbox"/>	<input type="checkbox"/>	<input type="checkbox"/>	
4. Establish a process to perform routine oral care every two hours with antiseptic mouthwash and Chlorhexidine 0.12 percent every 12 hours (create visual cues, partner with respiratory therapy in performing oral care). Make the above oral care part of the ventilator order set as an automatic order that requires the physician to actively exclude it.	<input type="checkbox"/>	<input type="checkbox"/>	<input type="checkbox"/>	
5. Include peptic ulcer disease prophylaxis (PUD) on ICU admission and ventilator order sets as an automatic order that requires the physician to actively exclude it.	<input type="checkbox"/>	<input type="checkbox"/>	<input type="checkbox"/>	
6. Include venous thromboembolism (VTE) prophylaxis on ICU admission and ventilator order sets as an automatic order that would require the physician to actively exclude it.	<input type="checkbox"/>	<input type="checkbox"/>	<input type="checkbox"/>	
7. Invite families to participate in care by encouraging them to ask if prevention efforts have been completed, such as oral care and HOB elevation. Educate families on the risk of VAE, preventive measures put in place and what they can do to help (e.g., perform oral care or passive range of motion exercises if willing).	<input type="checkbox"/>	<input type="checkbox"/>	<input type="checkbox"/>	
8. Perform and coordinate SAT and SBT to maximize weaning opportunities when patient sedation is minimal. Coordinate between nursing and respiratory therapy to manage SAT and SBT, perform daily assessment or readiness to wean and extubate.	<input type="checkbox"/>	<input type="checkbox"/>	<input type="checkbox"/>	
9. Establish a process for timely physical and occupational therapy evaluation for patients on ventilator support to establish a plan for progressive mobility.	<input type="checkbox"/>	<input type="checkbox"/>	<input type="checkbox"/>	
10. Manage delirium by assessing patients for delirium at least once daily. Sedation should be goal oriented and should be administered, as ordered, by the physician according to a scale such as Richmond Agitation Sedation Scale (RASS).	<input type="checkbox"/>	<input type="checkbox"/>	<input type="checkbox"/>	

APPENDIX II: EXAMPLE OF VAE PREVENTION VISUAL CUE – POSTED AT THE BEDSIDE

Associated Hospital/Organization: Developed by Cynosure Health Solutions, redesigned for the purposes of this change package

Purpose of Tool: Sign to post at bedside as a reminder to staff and family.

Reference: Cynosure Health Solutions

ICU BEST PRACTICE for VENTILATED PATIENTS

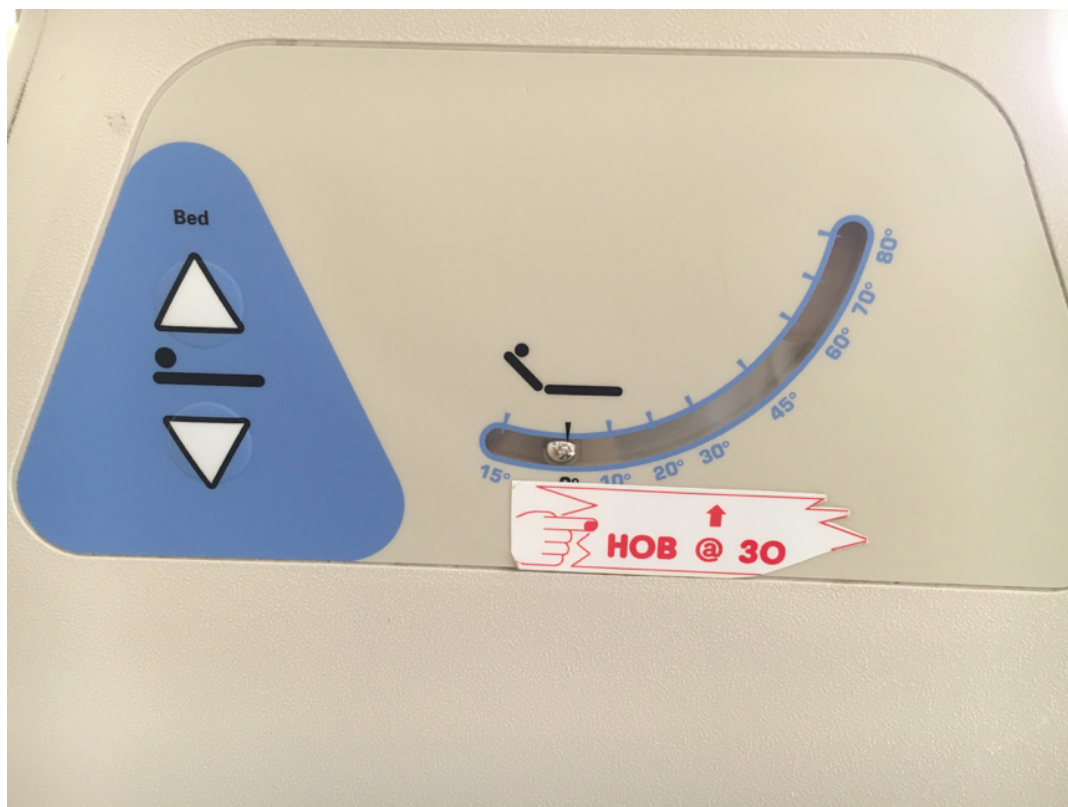
H	HEAD OF BED UP TO 30 — 45 DEGREES
E	ENTERAL FEEDING AND EVERY 2 HOURS ORAL CARE
A	AIR MATTRESS AND TURN EVERY TWO HOURS
D	DVT PROPHYLAXIS
S	SEDATION VACATION
U	ULCER PROPHYLAXIS
P	PAIN CONTROL

APPENDIX III: EXAMPLE OF A COLORED STRIPE ON BED FRAME SIDE RAIL

Associated Hospital/Organization: Cynosure Health Solutions

Purpose of Tool: Provide a visual cue on hospital beds to indicate HOB elevation of 30 degrees.

Reference: Cynosure Health Solutions



APPENDIX IV: EXAMPLE OF A BEST PRACTICE CHECKLIST

Associated Hospital/Organization: Cynosure Health Solutions, redesigned for the purposes of this change package

Purpose of Tool: Daily audit of intensive care unit best practices.

Reference: Cynosure Health Solutions

ICU Best Practice Audit

Date

BED #	NOT ICU STATUS	MR #	BGM OVER 200 – WRITE NOTE FOR FOLLOW UP LINE CARE	SEPSIS MEETS CVP GOAL >8	SEPSIS MEETS FLUID GOAL 2L (INITIAL)	PUD PROPHYLAXIS	VTE PROPHYLAXIS	PROGRESSIVE MOBILITY
						<input type="checkbox"/> Y <input type="checkbox"/> N <input type="checkbox"/> NA	<input type="checkbox"/> Y <input type="checkbox"/> N <input type="checkbox"/> NA	<input type="checkbox"/> Y <input type="checkbox"/> N <input type="checkbox"/> NA
						<input type="checkbox"/> Y <input type="checkbox"/> N <input type="checkbox"/> NA	<input type="checkbox"/> Y <input type="checkbox"/> N <input type="checkbox"/> NA	<input type="checkbox"/> Y <input type="checkbox"/> N <input type="checkbox"/> NA
						<input type="checkbox"/> Y <input type="checkbox"/> N <input type="checkbox"/> NA	<input type="checkbox"/> Y <input type="checkbox"/> N <input type="checkbox"/> NA	<input type="checkbox"/> Y <input type="checkbox"/> N <input type="checkbox"/> NA
						<input type="checkbox"/> Y <input type="checkbox"/> N <input type="checkbox"/> NA	<input type="checkbox"/> Y <input type="checkbox"/> N <input type="checkbox"/> NA	<input type="checkbox"/> Y <input type="checkbox"/> N <input type="checkbox"/> NA
						<input type="checkbox"/> Y <input type="checkbox"/> N <input type="checkbox"/> NA	<input type="checkbox"/> Y <input type="checkbox"/> N <input type="checkbox"/> NA	<input type="checkbox"/> Y <input type="checkbox"/> N <input type="checkbox"/> NA
						<input type="checkbox"/> Y <input type="checkbox"/> N <input type="checkbox"/> NA	<input type="checkbox"/> Y <input type="checkbox"/> N <input type="checkbox"/> NA	<input type="checkbox"/> Y <input type="checkbox"/> N <input type="checkbox"/> NA
						<input type="checkbox"/> Y <input type="checkbox"/> N <input type="checkbox"/> NA	<input type="checkbox"/> Y <input type="checkbox"/> N <input type="checkbox"/> NA	<input type="checkbox"/> Y <input type="checkbox"/> N <input type="checkbox"/> NA
						<input type="checkbox"/> Y <input type="checkbox"/> N <input type="checkbox"/> NA	<input type="checkbox"/> Y <input type="checkbox"/> N <input type="checkbox"/> NA	<input type="checkbox"/> Y <input type="checkbox"/> N <input type="checkbox"/> NA

VAE Bundle

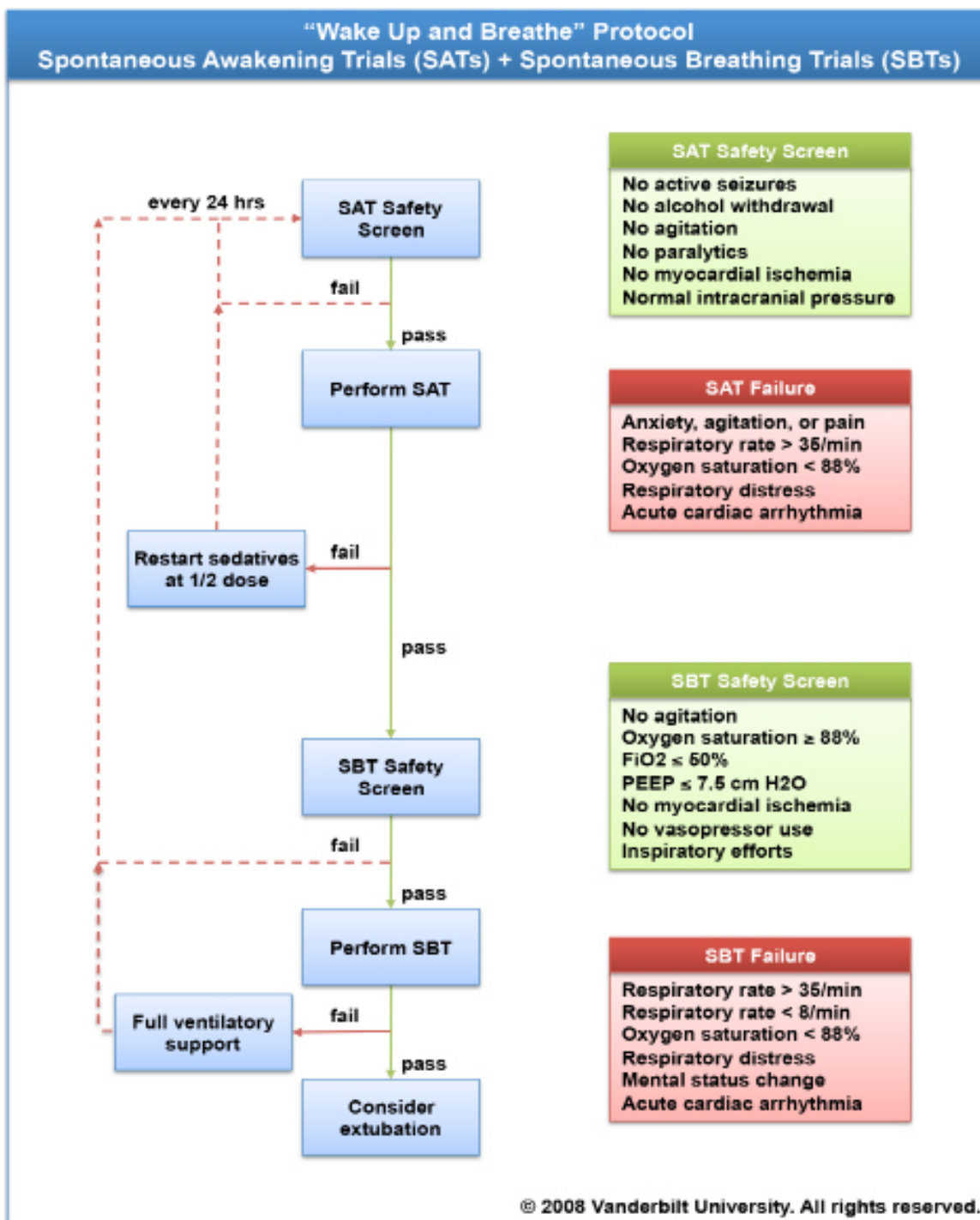
HOB 30-45°, YES CIRCLE SHIFT, NO X OUT SHIFT	ORAL CARE Q 2H	CHLORHEXIDINE ORAL RINSE Q 12H	SAT/SBT DONE
N D E	<input type="checkbox"/> Y <input type="checkbox"/> N	<input type="checkbox"/> Y <input type="checkbox"/> N	<input type="checkbox"/> Y <input type="checkbox"/> N
N D E	<input type="checkbox"/> Y <input type="checkbox"/> N	<input type="checkbox"/> Y <input type="checkbox"/> N	<input type="checkbox"/> Y <input type="checkbox"/> N
N D E	<input type="checkbox"/> Y <input type="checkbox"/> N	<input type="checkbox"/> Y <input type="checkbox"/> N	<input type="checkbox"/> Y <input type="checkbox"/> N
N D E	<input type="checkbox"/> Y <input type="checkbox"/> N	<input type="checkbox"/> Y <input type="checkbox"/> N	<input type="checkbox"/> Y <input type="checkbox"/> N
N D E	<input type="checkbox"/> Y <input type="checkbox"/> N	<input type="checkbox"/> Y <input type="checkbox"/> N	<input type="checkbox"/> Y <input type="checkbox"/> N
N D E	<input type="checkbox"/> Y <input type="checkbox"/> N	<input type="checkbox"/> Y <input type="checkbox"/> N	<input type="checkbox"/> Y <input type="checkbox"/> N
N D E	<input type="checkbox"/> Y <input type="checkbox"/> N	<input type="checkbox"/> Y <input type="checkbox"/> N	<input type="checkbox"/> Y <input type="checkbox"/> N
N D E	<input type="checkbox"/> Y <input type="checkbox"/> N	<input type="checkbox"/> Y <input type="checkbox"/> N	<input type="checkbox"/> Y <input type="checkbox"/> N

APPENDIX V: SAMPLE SAT/SBT PROTOCOL

Associated Hospital/Organization: Kansas University Hospital, Kansas City, KS

Purpose of Tool: Guide SAT/SBT daily assessment and intervention.

Reference: The "Wake Up and Breathe" protocol pioneered by Vanderbilt University can be found at: <http://www.mc.vanderbilt.edu/icudelirium/docs/WakeUpAndBreathe.pdf>



APPENDIX VI: SAMPLE COMMUNICATION OF REST PERIOD

Associated Hospital/Organization: Cynosure Health Solutions

Purpose of Tool: Communicate to team members and visitors that the patient is resting.

Reference: Cynosure Health Solutions



Shhh...I'm getting my ZZZZZZZZZ

DO NOT DISTURB

Sleep cycle in progress

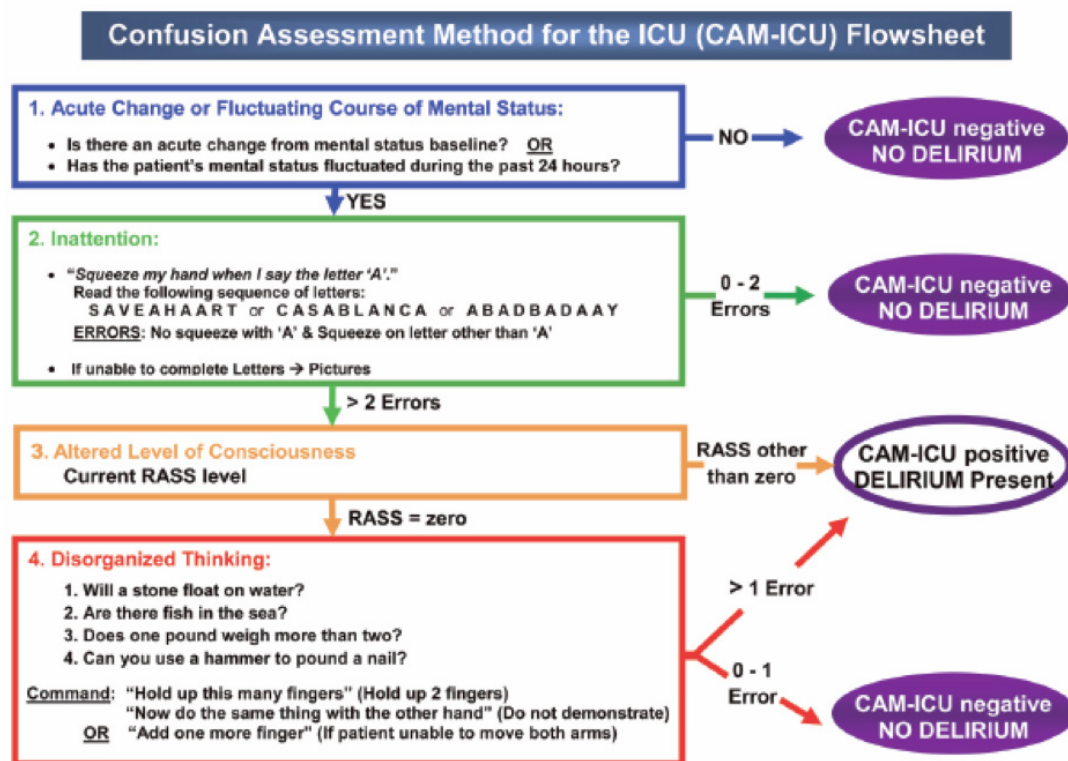
Please check with nurse before entering

APPENDIX VII: SEDATION PROTOCOL FOR MECHANICAL VENTILATED PATIENTS

Associated Hospital/Organization: ICU Delirium and the Cognitive Study Group

Purpose of Tool: Guide goal directed analgesia and sedation.

Reference: www.icudelirium.org



Copyright © 2002, E. Wesley Ely, MD, MPH and Vanderbilt University, all rights reserved

The Confusion Assessment Method in the ICU tool can be found at:
http://www.icudelirium.org/docs/CAM_ICU_flowsheet.pdf
Used with permission.

APPENDIX VIII: SAMPLE EARLY PROGRESSIVE MOBILITY PROTOCOL

Associated Hospital/Organization: American Association of Critical Care Nurses

Purpose of Tool: Reference guide for early progressive mobility.

Reference: www.AACN.org

EARLY PROGRESSIVE MOBILITY PROTOCOL

Step 1 – Safety Screening

**Evaluate
Daily**

(Patient must meet all criteria)

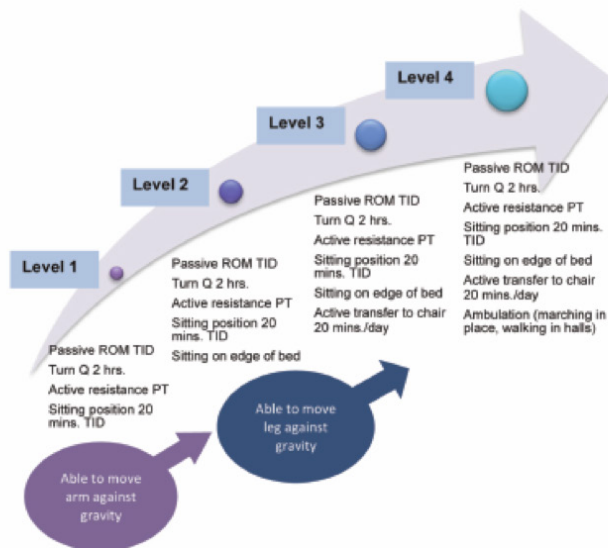
- M** – Myocardial stability
 - No evidence of active myocardial ischemia x 24 hrs.
 - No dysrhythmia requiring new antidysrhythmic agent x 24 hrs.
- O** – Oxygenation adequate on:
 - $\text{FIO}_2 \leq 0.6$
 - $\text{PEEP} < 10 \text{ cm H}_2\text{O}$
- V** – Vasopressor(s) minimal
 - No increase of any vasopressor x 2 hrs.
- E** – Engages to voice
 - Patient responds to verbal stimulation

Fails

Re-evaluate
in 24 hours

Passes

Step 2 – Progressive Mobility



American Association of Critical-Care Nurses. AACN Pearl: Early Progressive Mobility Protocol.

Available at: <http://www.aacn.org/wd/practice/docs/tool%20kits/early-progressive-mobility-protocol.pdf>

Accessed April 15, 2014. Used with permission.

APPENDIX IX: SAMPLE FAMILY EDUCATION TOOL

Associated Hospital/Organization: Cynosure Health Solutions, redesigned for the purposes of this change package

Purpose of Tool: Education of family members on mechanical ventilation and VAE prevention.

Reference: Cynosure Health Solutions

What does it all mean — my loved one is on a breathing machine?

The tube and machine:

Sometimes when a person is not able to breathe well on their own, a breathing tube is placed in the wind-pipe (trachea) and connected to a machine (ventilator) that helps the person breathe. The ventilator provides air and oxygen when it supports the person's breathing. There are some risks for complications of being on a ventilator, like pneumonia and blood clots.

The health care team's actions to reduce risk for complications:

The doctors, nurses, respiratory therapists, physical therapists and other members of the health care team work together to reduce the risk of complications of being on a ventilator. This work includes:

- > Keeping the head of the bed up. This prevents secretions from causing pneumonia.
- > Administering medication to prevent stomach ulcers
- > Administering medication or special leg sleeves to prevent blood clots
- > Providing frequent oral care to help prevent pneumonia
- > Using breathing tests to evaluate progress
- > Administering medications to help the lungs breathe often called a "breathing treatment"
- > Conducting simple exercises done in bed, often called passive range of motion, to help keep muscles from getting too weak

What can you do to help your loved one?

As a family member, you can be a valuable member of the care team - an extra set of eyes or a gentle voice to help caregivers. Here are some things you can do:

- > Remind staff to raise the head of the bed if you see that it is flat. Be aware that sometimes the head of bed needs to be flat depending on patient situation.
- > Ask what you can do to help with bed exercises (passive range of motion) if you think you would be comfortable assisting the patient. Many loved ones like to help with the gentle exercises and stretching.
- > Ask if you can help with the oral care, such as moistening lips and mouth.
- > Ask other members of the health care team to wash their hands if you do not see them do this. Washing hands is the number one way to prevent infection!

PART 6: REFERENCES

1. Bird D, Zambuto A, O'Donnell C, et al. Adherence to ventilator-associated pneumonia bundle and incidence of ventilator associated pneumonia in the surgical intensive care unit. *Archives of Surgery*. 2010;145(5):465-470.
2. Eom JS, et al. (2014). The impact of a ventilator bundle on preventing ventilator-associated pneumonia: a multicenter study. *American Journal of Infection Control*, 42(1):34-37.
3. How-to Guide: *Prevent Ventilator-Associated Pneumonia*. Cambridge, MA: Institute for Healthcare Improvement;2012.
4. Frimpong K, Stollings JL, Carolo ME, Ely EW. (2015). ICU delirium viewed through the lens of the PAD guidelines and the ABCDEF implementation bundle. Eds. M Balas, T Clemmer, K Hargett. *ICU Liberation. Society of Critical Care Medicine*, pp. 79-88. Retrieved at http://www.icudelirium.org/docs/ICULiberation_Frimpong_DeliriumABCDEF_d1_2015.pdf
5. Behrendt CE. Acute respiratory failure in the United States: incidence and 31-day survival. *Chest Journal*. 2000;118:1100-5.
6. Wunsch H, Linde-Zwirble WT, Angus DC, Hartman ME, Milbrandt EB, Kahn JM. The epidemiology of mechanical ventilation use in the United States. *Critical Care Medicine Journal*. 2010;38:1947-53.
7. Kahn JM, Goss CH, Heagerty PJ, et al. Hospital volume and the outcomes of mechanical ventilation. *New England Journal of Medicine*. 2006;355:41-50.
8. Magill SS., Edwards, JR., Bamberg, W., et al. "Multistate Point-Prevalence Survey of Health Care Associated Infections, 2011". *New England Journal of Medicine*. 370: (2014): 1198-208.
9. Rubenfeld GD, Caldwell E, Peabody E, et al. Incidence and outcomes of acute lung injury. *New England Journal of Medicine*. 2005;353:1685-93.
10. Esteban A, Anzueto A, Frutos F, et al. Characteristics and outcomes in adult patients receiving mechanical ventilation: a 28-day international study. *Journal of the American Medical Association*. 2002;287:345-55.
11. Melsen WG, Rovers MM, Doeman M, Bonten MJM. (2001). Estimating the attributable mortality of ventilator-associated pneumonia from randomized prevention studies. *Critical Care Medicine Journal*. 39(12):2736-2742.
12. Melsen WG, et al. (2013). Attributable mortality of ventilator-associated pneumonia: a meta-analysis of individual patient data from randomized prevention studies. *Lancet Infectious Disease*. 13(8):665-667.
13. Zimlichman E, Henderson D, Tamir O, et al. Health Care-Associated Infections: A Meta-analysis of Costs and Financial Impact on the US Health Care System. *JAMA Internal Medicine*. 2013;173(22):2039-2046.
14. AACN practice alert: ventilator-associated pneumonia. *AACN Clin Issues*. 2005;16(1): 105-109.
15. Drakulovic MB, Torres A, Bauer TT, Nicolas JM, Nogue S, Ferrer M. Supine body position as a risk factor for nosocomial pneumonia in mechanically ventilated patients: a randomized trial. *Lancet*. 1999; 354(9193):1851-1858.
16. Collard HR, Saint S, Matthay MA. Prevention of ventilator-associated pneumonia: an evidence-based systematic review. *Annals of Internal Medicine*. 2003;138(6):494-501.
17. Torres A, Serra-Batilles J, et al. Pulmonary aspiration of gastric contents in patients receiving mechanical ventilation: the effect of body position. *Annals of Internal Medicine*. 1992;116(7):540-543.
18. Schallom M, Dykeman B, Metheny M, Kerby J, Pierce J. (2015). Head-of-bed elevation and early outcomes of gastric reflux, aspiration, and pressure ulcers: a feasibility study. *American Journal of Critical Care*, 24(1):57-65.
19. Klompas M, et al. (2014). Strategies to prevent ventilator-associated pneumonia in acute care hospitals: 2014 update. *Infection Control and Hospital Epidemiology*, 35(8):915-936.
20. Hiner, C, Kasuya T, Cottingham C, Whitney J. Clinicians' perception of head-of-bed elevation. *American Journal of Critical Care*. 2010;19(2):164-167.
21. Helman DC Jr, Shermer JH 3rd, Fitzpatrick TM, Callendar ME, Shorr AF. Effect of standardized orders and provider education on head-of-bed positioning in mechanically ventilated patients. *Critical Care Medicine*. 2003;31(9):2285-2290.
22. Li BG, Torres A. (2011). Ventilator-associated pneumonia: role of positioning. *Current Opinion in Critical Care*, 17:57-63.
23. Landor N, Charrvat P. VAP: *It's the little things that count*. PSQH 2010 Nov-Dec.
24. Panella M, Marchisio S, Di Stanislao F. Reducing clinical variations with clinical pathways: Do pathways work? *International Journal for Quality in Health Care*. 2003;15:509-521.

25. Abbot CA, Dremsa T, Stewart DW, Mark DD, Swift CC. Adoption of a ventilator- associated pneumonia clinical practice guideline. *Worldviews on Evidence-Based Nursing*. 2006;4(3):139-152.
26. California Acute Stroke Pilot Registry Investigators. The impact of standardized stroke orders on adherence to best practices. *Neurology*. 2005;65:360-365.
27. Micek ST, Roubinian N, Heuring T, et al. Before-after study of a standardized hospital order set for the management of septic shock. *Critical Care Medicine*. 2006;34:2707-2713.
28. Collard HR, Saint S, Matthay MA. Prevention of ventilator-associated pneumonia: an evidence-based systematic review. *Annals of Internal Medicine*. 2003;138(6):494-501.
29. Darlong V, Jayalakhsmi TS, Kaul GH, Tandon R. Stress ulcer prophylaxis in patients on ventilator. *Tropical Gastroenterology*. 2003;23(3):124-128.
30. Dellinger RP, Carlet JM, Masur H, et al. Surviving Sepsis Campaign guidelines for management of severe sepsis and septic shock. *Critical Care Medicine*. Mar 2004;32(3):858-873.
31. Patel R, et al. (2010). The impact of a pharmacist's participation on hospitalists' rounds. *Hospital Pharmacist*. 45(2):129-134.
32. Kucukarslan SN, et al. (2013). Evaluation of a dedicated pharmacist staffing model in the medical intensive care unit. *Hospital Pharmacist*. 48(11):992-932.
33. Kahn SR, et al. (2012). Prevention of vte in nonsurgical patients: antithrombotic therapy and prevention of thrombosis, 9th ed: American College of Chest Physicians evidence-based clinical practice guidelines. *Chest Journal*. 141(2 Suppl):e195S-226S.
34. Guyatt GH, Akl EA, Crowther M, Gutterman DD, Schunemann H. Executive summary: Antithrombotic therapy and prevention of thrombosis, 9th ed: American College of Chest Physicians evidence-based clinical practice guidelines. *Chest Journal*. 2012; 141:7S-47S.
35. Roderick P, et al. Towards evidence-based guidelines for the prevention of venous thromboemboli: Systematic reviews of mechanical methods, oral anticoagulation, dextran and regional anesthesia as thromboprophylaxis. *Health Technology Assessment Journal*. 2005;9(49).
36. Frimpong K, Stollings JL, Carolo ME, Ely EW. (2015). ICU delirium viewed through the lens of the PAD guidelines and the ABCDEF implementation bundle. Eds. M Balas, T Clemmer, K Hargett. ICU Liberation. *Society of Critical Care Medicine*. pp. 79-88. Retrieved at: http://www.icudelirium.org/docs/ICULiberation_Frimpong_DeliriumABCDEF_d1_2015.pdf
37. ABCDE Bundle: Collaboration to improve outcomes for ventilated patients. *Bold Voices*. 2012;4(10):13.
38. AACN Practice Alert: Delirium assessment and management. Issued Nov 2011. Accessed March 15, 2012. Retrieved at: <http://www.aacn.org/WD/practice/docs/practicealerts/delirium-practice-alert-2011.pdf>.
39. ABCDEs of Prevention and Safety. Accessed March 15, 2012. Retrieved at: www.ICUdelirium.org.
40. Estad BL, Puntillo K, Gilbert HC, et al. (2009). Pain management principles in the critically ill. *Chest Journal*. 135:1075-1086.
41. Puntillo K, Pasero C, Li D, et al. (2009). Evaluation of pain in ICU patients. *Chest Journal*. 135:1069-1074
42. Barr J, Fraser GL, Puntillo K, et al. Clinical practice guidelines for the management of pain, agitation, and delirium in adult patients in the ICU. *Critical Care Medicine*. 2013;41:263-306.
43. Riker RR, Frase GL. The new practice guidelines for pain, agitation, and delirium. *American Journal of Critical Care*. 2013;22:153-157.
44. Barr J, Fraser GL, Puntillo K, et al. Clinical practice guidelines for the management of pain, agitation, and delirium in adult patients in the ICU. *Critical Care Medicine*. 2013;41:263-306.
45. Vanderbilt ICU Delirium and Cognitive Impairment Study Group. *Assessment and Management Strategies: CPOT and BPS*. Retrieved from <http://www.icudelirium.org/pain.html>.
46. Kress JP, Pohlman AS, O'Connor MF, Hall JB. Daily interruption of sedative infusions in critically ill patients undergoing mechanical ventilation. *New England Journal of Medicine*. 2000;342: 1471-1477.
47. Frimpong K, Stollings JL, Carolo ME, Ely EW. (2015). ICU delirium viewed through the lens of the PAD guidelines and the ABCDEF implementation bundle. Eds. M Balas, T Clemmer, K Hargett. ICU Liberation. *Society of Critical Care Medicine*. pp. 79-88. Retrieved at http://www.icudelirium.org/docs/ICULiberation_Frimpong_DeliriumABCDEF_d1_2015.pdf

48. Dale CR, et al. Improved analgesia, sedation, and delirium protocol associated with decrease duration of delirium and mechanical ventilation. *Annals of the American Thoracic Society*, 11(3):367-374.
49. Kress JP, Pohlman AS, O'Connor MF, Hall JB. Daily interruption of sedative infusions in critically ill patients undergoing mechanical ventilation. *New England Journal of Medicine*. 2000; 342: 1471-1477.
50. Bingaman M, Rahman O. Decreasing ICU LOS, VAP rate, and mechanical ventilator days using an electronic standardized wean screen tool by the respiratory therapist. *Chest Journal*. 2011, 140(4):404A.
51. Brook AD, Ahrens TS, Schai R, et al. Effect of a nursing-implemented sedation protocol on the duration of mechanical ventilation. *Critical Care Medicine*. 1999; 27(12):2824-2825.
52. Dries DJ, McGonigal M, Malian MS, Bor B, Sullivan C. Protocol driven ventilator weaning reduces use of mechanical ventilation, rate of early reintubation, and ventilator-associated pneumonia. *Journal of Trauma, Injury, Infection and Critical Care*. 2004;56(5):943-952.
53. Ely W, Meade MO, Haponik EF, et al. Mechanical ventilator weaning protocols driven by nonphysician health-care professions: Evidence-based clinical practice guideline. *Chest Journal*. 2001; 120(6):454S-463S.
54. Brook AD, Ahrens TS, Schai R, et al. Effect of a nursing-implemented sedation protocol on the duration of mechanical ventilation. *Critical Care Medicine*. 1999;27(12):2824-2825.
55. DeJonghe B, Bastuji-Garin S, Fangio P, et al. Sedation algorithm in critically ill patients without brain injury. *Critical Care Medicine*. 2005;33(1):120-127.
56. Quenot JP, Ladoire S, Devoucoux F, et al. Effect of a nurse-implemented sedation protocol on the incidence of ventilator-associated pneumonia. *Critical Care Medicine*. 2007;35(9):2031-2036.
57. Pandharipande TD, Girard JC, Morandi A, Thompson JL, Pun BT, Brummel NE, et al. Long-term cognitive impairment after critical illness. *New England Journal of Medicine*. 2013;369:1306-1316.
58. Ouimet S, Kavanagh BP, Gottfried SB, Skrobik Y. Incidence, risk factors and consequences of ICU delirium. *Intensive Care Medicine*. 2007;33(1):66-73.
59. Van Rompaey B, Elseviers MM, Schuurmans MJ, Shortridge-Baggett LM, Truijen S, Bossaert L. Risk factors for delirium in intensive care patients: a prospective cohort study. *Journal of Critical Care*. 2009; 13(3):R77.
60. Spronk PE, Riekerk B, Hfuis J, Rommes JH. Occurrence of delirium is severely underestimated in the ICU during daily care. *Intensive Care Medicine*. 2009;39(3):248-253.
61. Van Eijk MM, van Marum RJ, Klijn IA, de WN, Kesecioglu J, Slooter AJ. Comparison of delirium assessment tools in a mixed intensive care unit. *Critical Care Medicine*. 2009;37(6):1881-1885.
62. Ely EW, Shintani A, Truman B, Speroff T, Gordo SM, Harrell FE, Inouye SK, Bernard GR, Dittus RS. Delirium as a predictor of mortality in mechanically ventilated patients in the intensive care unit. *Journal of the American Medical Association*. 2004;291(14):1753-1762.
63. Pandharipande TD, Girard JC, Morandi A, Thompson JL, Pun BT, Brummel NE, et al. Long-term cognitive impairment after critical illness. *New England Journal of Medicine*. 2013;369:1306-1316.
64. McNicoll L, Pisani MA, Zhang Y, Ely EW, Siegel MD, Inouye SK. Delirium in the intensive care unit: occurrence and clinical course in older patients. *Journal of the American Geriatric Society*. 2003;51(5):591-598.
65. Pandharipande P, Cotton BA, Shintani A, et al. Prevalence and risk factors for development of delirium in surgical and medical intensive care unit. *Journal of Trauma and Acute Care Surgery*. 2008;65(1):34-41.
66. Pandharipande P, Shintani A, Paterson J, et al. Lorazepam is an independent risk factor for transitioning to delirium in intensive care unit patients. *Anesthesiology Journal*. 2006;104(1):21-26.
67. Pandharipande TD, Girard JC, Morandi A, Thompson JL, Pun BT, Brummel NE, et al. Long-term cognitive impairment after critical illness. *New England Journal of Medicine*. 2013;369:1306-1316.
68. E-Early Exercise and Progressive Mobility. Session Notes from NTI 2012 (ABCDE Bundle). Accessed October 30, 2012. Retrieved at: <http://www.aacn.org/wd/nti/nti2012/docs/pearl/early%20exercise%20and%20progressive%20mobility/early-mobility-nti-session-notes.pdf>.
69. Stevens RD, Marshall SA, Cornblath DR, et al. A framework for diagnosing and classifying intensive care unit acquired weakness. *Critical Care Medicine*. 2009;37(10)(suppl):S299-S308.

70. Bolton CF, Gilbert JJ, Han AF, Sibbald WJ. Polyneuropathy in critical ill patients. *Journal of Neurology Neurosurgery and Psychiatry*. 1984;47(11):1223-1231.
71. Schweickert WD, Pohlman MC, Pohlman AS, et al. Early physical and occupational therapy in mechanically ventilated, critically ill patients: a randomized controlled trial. *Lancet*. 2009;373(9678):1874-1882.
72. Morris PE, Goad A, Thompson C, et al. Early intensive care unit mobility therapy in the treatment of acute respiratory failure. *Critical Care Medicine*. 2008;36(8):2238-2243.
73. Vollman K. Progressive mobility in the critical ill. *Critical Care Nurse*. 2010;30(2):S3-S5.
74. Barr J, Fraser GL, Puntillo K, et al. Clinical practice guidelines for the management of pain, agitation, and delirium in adult patients in the ICU. *Critical Care Medicine*. 2013;41:263-306.
75. Riker RR, Frase GL. The new practice guidelines for pain, agitation, and delirium. *American Journal Critical Care*. 2013;22:153-157.
76. Needham DM, Korupolu R, Zanni JM. Early physical medicine and rehabilitation for patients with acute respiratory failure: a quality improvement project. *Archives of Physical Medicine and Rehabilitation*. 2010;91:536-542.
77. Schweickert WD, Pohlman MC, Pohlman AS, et al. Early physical and occupational therapy in mechanically ventilated, critically ill patients: a randomized controlled trail. *Lancet*. 2009;373:1874-1882.
78. Help prevent pneumonia from a ventilator (Breathing machine). Retrieved at: www.campaignzero.org/safety-checklists/prevent-pneumonia/.
79. Jones C, et. al. (2010). Intensive care diaries reduce new onset post traumatic stress disorder following critical illness: a randomized, controlled trial. *Critical Care*, 14(5):R168.
80. Guard TD, Kress JP, et al. Efficacy and safety of a paired sedation and ventilator weaning protocol for mechanically ventilated patients in intensive care (awaking and breathing controlled trial): a randomized controlled trial. *Lancet*. 2008;371(9607):126-134.
81. Kress JP, O'Connor MF, Pohlman AS, et al. Sedation of critically ill patients during mechanical ventilation: a comparison of propofol and midazolam. *American Journal of Respiratory and Critical Care Medicine*. 1996;153(3):1012-1018.
82. Garcia R, Jendresky L, Colbert L, Bailey A, Zaman M, Majumder M. Reducing ventilator-associated pneumonia through advanced oral-dental care: A 48-month study. *American Journal of Critical Care*. 2009; 18(6):523-532.
83. Munro CL, Grap MJ, Jones DI, McClish DK, Sessler CN. Chlorhexidine, tooth brushing and preventing ventilator-associated pneumonia in critically ill adults. *American Journal of Critical Care*. 2009; 18(5):428-437.
84. Garcia R, Jendresky L, Colbert L, Bailey A, Zaman M, Majumder M. Reducing ventilator-associated pneumonia through advanced oral-dental care: A 48-month study. *American Journal of Critical Care*. 2009; 18(6):523-532.
85. Culter J, Davis N. Improving oral care in patients receiving mechanical ventilation. *American Journal of Critical Care*. 2005;14(5):389-394.
86. Chan EY, Ruest A, O'Meade M, Cook DJ. Oral decontamination for prevention of pneumonia in mechanically ventilated adults: Systematic review and meta-analysis. *British Medical Journal*. 2007; 10:1136.
87. Genuit T, Bochicchio G, Napolitano LM, McCarter RJ, Roghman MC. Prophylactic chlorhexidine oral rinse decreases ventilator-associated pneumonia in surgical ICU patients. *Surgical Infections*. 2001 Spring;2(1):5-18.
88. Houston S, Hougland P, Anderson JJ, et al. Effectiveness of 0.12% chlorhexidine gluconate oral rinse in reducing prevalence of nosocomial pneumonia in patients undergoing heart surgery. *American Journal of Critical Care*. 2002;11:567-570.
89. Cocanour CS, Peninger M, Domonoske BD, et al. Decreasing ventilator-associated pneumonia in trauma ICU. *Journal of Trauma and Acute Care Surgery*. 2006;61:122-130.
90. Quenot JP, Ladoire S, Devoucoux F, et al. Effect of a nurse-implemented sedation protocol on the incidence of ventilator-associated pneumonia. *Critical Care Medicine*. 2007;35(9):2031-2036.
91. McDonald S, Tullai-McGuinness S, Madigan E, Shiverly M. Relationship between staff nurse involvement in organizational structures and perception of empowerment. *Critical Care Nursing Quarterly*. 2010;33(2):148-162.
92. Brody, AA. Barnes K, Ruble C, Sakowski J. Evidence-based practice councils: Potential path to staff nurse empowerment and leadership growth. *Journal of Nursing Administration*. 2012;42(1).

